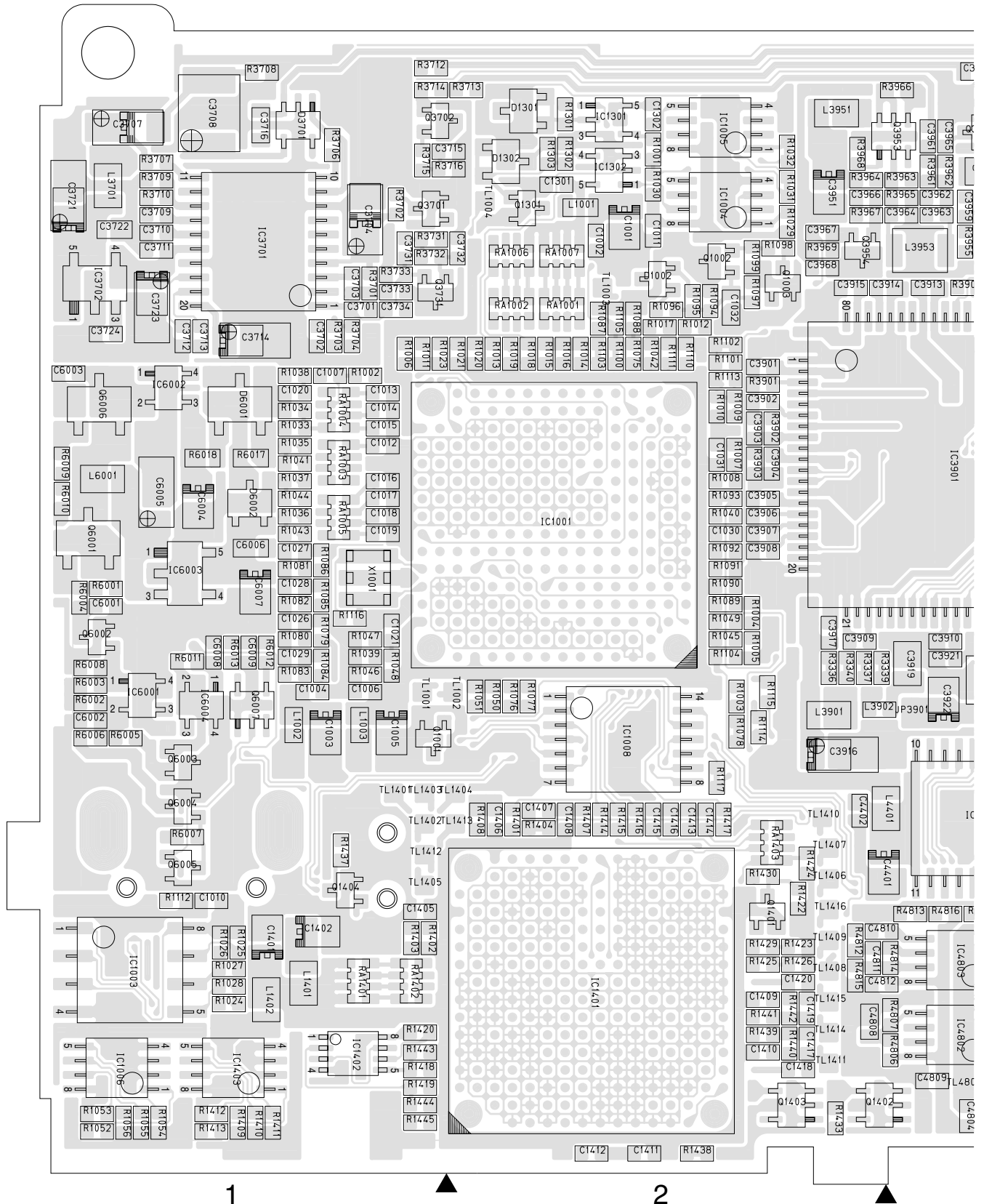


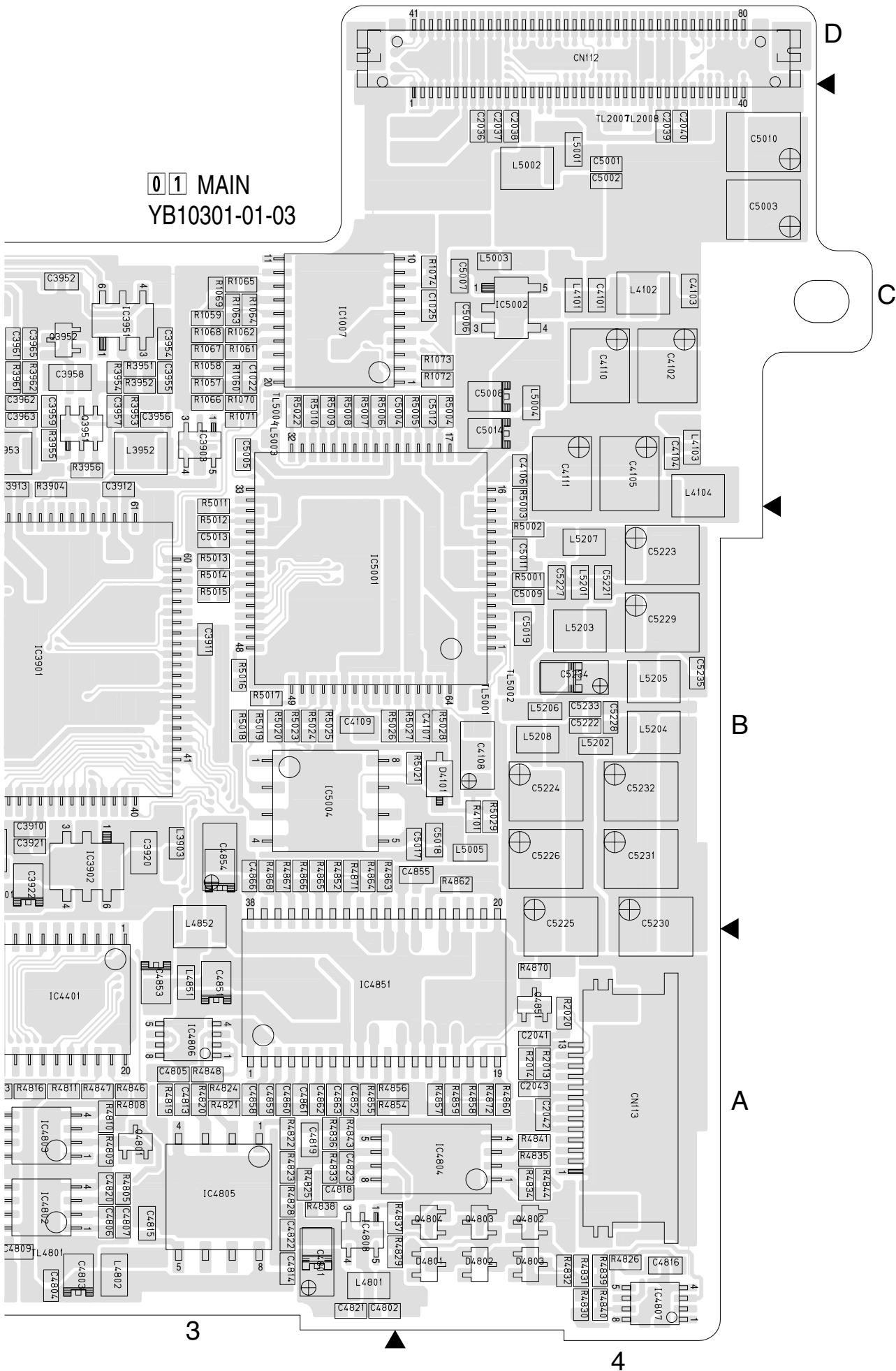
SECTION 4
CHARTS AND DIAGRAM

4.1 MAIN CIRCUIT BOARD

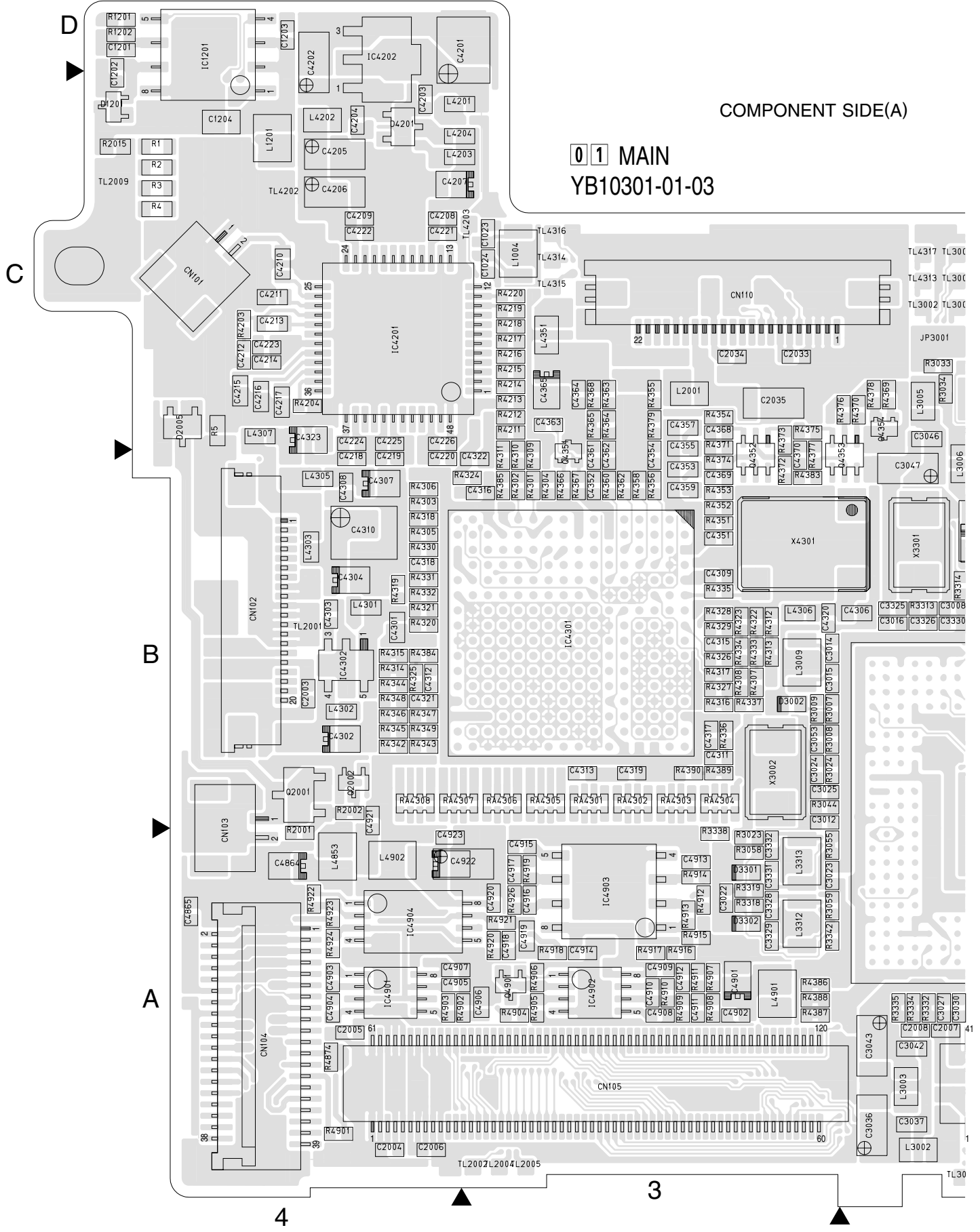
FOIL SIDE(B)

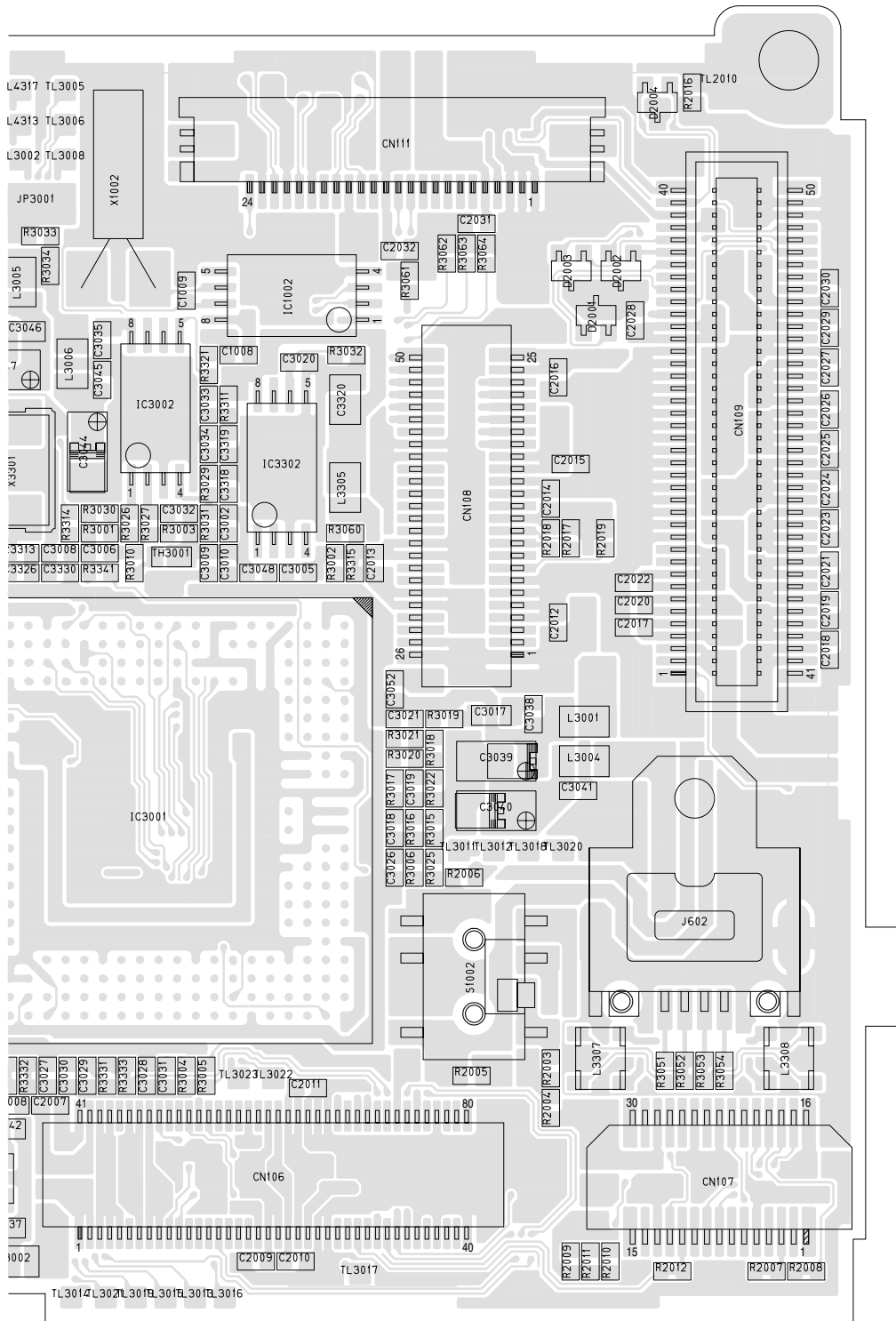


01 MAIN
YB10301-01-03



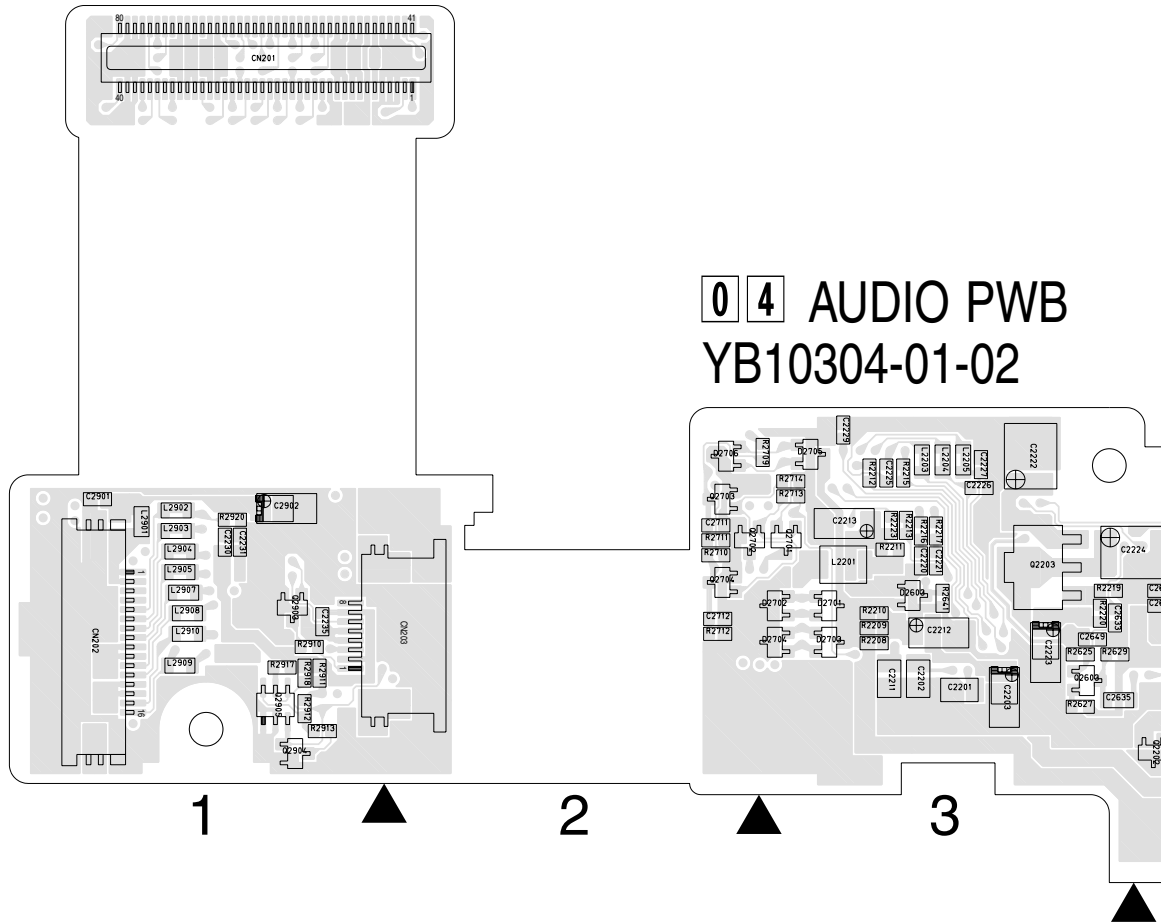
REF.NO.	LOCATION	REF.NO.	LOCATION	REF.NO.	LOCATION	REF.NO.	LOCATION	REF.NO.	LOCATION	REF.NO.	LOCATION
R1076	B C 2B	R2016	A C 1C	R3961	B C 3C	R4383	A C 3B	R5003	B C 4C	TL2009	A C 4C
R1077	B C 2B	R2017	A C 1B	R3962	B C 3C	R4384	A C 4B	R5004	B C 4C	TL2010	A C 1C
R1078	B C 2B	R2018	A C 1B	R3963	B C 3C	R4385	A C 3B	R5005	B C 4C	TL3002	A C 2C
R1079	B C 1B	R2019	A C 1B	R3964	B C 2C	R4386	A C 3A	R5006	B C 3C	TL3005	A C 2C
R1080	B C 1B	R2020	B C 4B	R3965	B C 3C	R4387	A C 3A	R5007	B C 3C	TL3006	A C 2C
R1081	B C 1B	R3001	A C 2B	R3966	B C 3C	R4388	A C 3A	R5008	B C 3C	TL3008	A C 2C
R1082	B C 1B	R3002	A C 2B	R3967	B C 3C	R4389	A C 3B	R5009	B C 3C	TL3011	A C 1A
R1083	B C 1B	R3003	A C 2B	R3968	B C 2C	R4390	A C 3B	R5010	B C 3C	TL3012	A C 1A
R1084	B C 1B	R3004	A C 2A	R3969	B C 2C	R4805	B C 3A	R5011	B C 3C	TL3013	A C 2A
R1085	B C 1B	R3005	A C 2A	R4101	B C 4B	R4806	B C 3A	R5012	B C 3B	TL3014	A C 2A
R1086	B C 1B	R3006	A C 1A	R4203	A C 4C	R4807	B C 3A	R5013	B C 3B	TL3015	A C 2A
R1087	B C 2B	R3007	A C 3B	R4204	A C 4C	R4808	B C 3A	R5014	B C 3B	TL3016	A C 2A
R1088	B C 2B	R3008	A C 3B	R4211	A C 3C	R4809	B C 3A	R5015	B C 3B	TL3017	A C 2A
R1089	B C 2B	R3009	A C 3B	R4212	A C 3C	R4810	B C 3A	R5016	B C 3B	TL3018	A C 1A
R1090	B C 2B	R3010	A C 2B	R4213	A C 3C	R4811	B C 3A	R5017	B C 3B	TL3019	A C 2A
R1091	B C 2B	R3015	A C 1B	R4214	A C 3C	R4812	B C 2A	R5018	B C 3B	TL3020	A C 1A
R1092	B C 2B	R3016	A C 1B	R4215	A C 3C	R4813	B C 3A	R5019	B C 3B	TL3021	A C 2A
R1093	B C 2B	R3017	A C 2B	R4216	A C 3C	R4814	B C 3A	R5020	B C 3B	TL3022	A C 2A
R1094	B C 2C	R3018	A C 1B	R4217	A C 3C	R4815	B C 2A	R5021	B C 4B	TL3023	A C 2A
R1095	B C 2C	R3019	A C 1B	R4218	A C 3C	R4816	B C 3A	R5022	B C 3C	TL4202	A C 4C
R1096	B C 2B	R3020	A C 2B	R4219	A C 3C	R4819	B C 3A	R5023	B C 3B	TL4203	A C 3C
R1097	B C 2C	R3021	A C 2B	R4220	A C 3C	R4820	B C 3A	R5024	B C 3B	TL4313	A C 2C
R1098	B C 2C	R3022	A C 1B	R4301	A C 3B	R4821	B C 3A	R5025	B C 3B	TL4314	A C 3C
R1099	B C 2C	R3023	A C 3A	R4302	A C 3B	R4822	B C 3A	R5026	B C 3B	TL4315	A C 3C
R1100	B C 2C	R3024	A C 3B	R4303	A C 4B	R4823	B C 3A	R5027	B C 4B	TL4316	A C 3C
R1101	B C 2B	R3025	A C 1A	R4304	A C 3B	R4824	B C 3A	R5028	B C 4B	TL4317	A C 2C
R1102	B C 2B	R3026	A C 2B	R4305	A C 4B	R4825	B C 3A	R5029	B C 4B	TL4801	B C 3A
R1103	B C 2B	R3027	A C 2B	R4306	A C 4B	R4826	B C 4A	R6001	B C 1B	TL5001	B C 4B
R1104	B C 2B	R3029	A C 2B	R4307	A C 3B	R4828	B C 3A	R6002	B C 1B	TL5002	B C 4B
R1105	B C 2B	R3030	A C 2B	R4308	A C 3B	R4829	B C 4A	R6003	B C 1B	TL5003	B C 3C
R1110	B C 2B	R3031	A C 2B	R4309	A C 3B	R4830	B C 4A	R6004	B C 1B	TL5004	B C 3C
R1111	B C 2B	R3032	A C 2B	R4310	A C 3B	R4831	B C 4A	R6005	B C 1B	X1001	B C 1B
R1112	B C 1A	R3033	A C 2C	R4311	A C 3B	R4832	B C 4A	R6006	B C 1B	X1002	A C 2C
R1113	B C 2B	R3034	A C 2C	R4312	A C 3B	R4833	B C 3A	R6007	B C 1A	X3002	A C 3B
R1114	B C 2B	R3044	A C 3B	R4313	A C 3B	R4834	B C 4A	R6008	B C 1B	X3301	A C 2B
R1115	B C 2B	R3051	A C 1A	R4314	A C 4B	R4835	B C 4A	R6009	B C 1B	X4301	A C 3B
R1116	B C 1B	R3052	A C 1A	R4315	A C 4B	R4836	B C 3A	R6010	B C 1B		
R1117	B C 2A	R3053	A C 1A	R4316	A C 3B	R4837	B C 4A	R6011	B C 1B		
R1201	A C 4D	R3054	A C 1A	R4317	A C 3B	R4838	B C 3A	R6012	B C 1B		
R1202	A C 4D	R3055	A C 3A	R4318	A C 4B	R4839	B C 4A	R6013	B C 1B		
R1301	B C 2C	R3058	A C 3A	R4319	A C 4B	R4840	B C 4A	R6017	B C 1B		
R1302	B C 2C	R3059	A C 3A	R4320	A C 4B	R4841	B C 4A	R6018	B C 1B		
R1303	B C 2C	R3060	A C 2B	R4321	A C 4B	R4843	B C 3A	RA1001	B C 2B		
R1401	B C 2A	R3061	A C 1C	R4322	A C 3B	R4844	B C 4A	RA1002	B C 2B		
R1402	B C 1A	R3062	A C 1C	R4323	A C 3B	R4846	B C 3A	RA1003	B C 1B		
R1403	B C 1A	R3063	A C 1C	R4324	A C 3B	R4847	B C 3A	RA1004	B C 1B		
R1404	B C 2A	R3064	A C 1C	R4325	A C 4B	R4848	B C 3A	RA1005	B C 1B		
R1407	B C 2A	R3311	A C 2B	R4326	A C 3B	R4852	B C 3B	RA1006	B C 2C		
R1408	B C 2A	R3313	A C 2B	R4327	A C 3B	R4854	B C 3A	RA1007	B C 2C		
R1409	B C 1A	R3314	A C 2B	R4328	A C 3B	R4855	B C 3A	RA1401	B C 1A		
R1410	B C 1A	R3315	A C 2B	R4329	A C 3B	R4856	B C 3A	RA1402	B C 1A		
R1411	B C 1A	R3318	A C 3A	R4330	A C 4B	R4857	B C 4A	RA1403	B C 2A		
R1412	B C 1A	R3319	A C 3A	R4331	A C 4B	R4858	B C 4A	RA4301	A C 3B		
R1413	B C 1A	R3321	A C 2B	R4332	A C 4B	R4859	B C 4A	RA4302	A C 3B		
R1414	B C 2A	R3331	A C 2A	R4333	A C 3B	R4860	B C 4A	RA4303	A C 3B		
R1415	B C 2A	R3332	A C 2A	R4334	A C 3B	R4862	B C 4B	RA4304	A C 3B		
R1416	B C 2A	R3333	A C 2A	R4335	A C 3B	R4863	B C 3B	RA4305	A C 3B		
R1417	B C 2A	R3334	A C 2A	R4336	A C 3B	R4864	B C 3B	RA4306	A C 3B		
R1418	B C 1A	R3335	A C 2A	R4337	A C 3B	R4865	B C 3B	RA4307	A C 4B		
R1419	B C 1A	R3336	B C 2B	R4342	A C 4B	R4866	B C 3B	RA4308	A C 4B		
R1420	B C 1A	R3337	B C 2B	R4343	A C 4B	R4867	B C 3B				
R1422	B C 2A	R3338	A C 3A	R4344	A C 4B	R4868	B C 3B	OTHER			
R1423	B C 2A	R3339	B C 2B	R4345	A C 4B	R4870	B C 4A	J602	A D 1A		
R1424	B C 2A	R3340	B C 2B	R4346	A C 4B	R4871	B C 3B	JP3001	A C 2C		
R1425	B C 2A	R3341	A C 2B	R4347	A C 4B	R4872	B C 4A	JP3901	B C 3B		
R1426	B C 2A	R3342	A C 3A	R4348	A C 4B	R4874	A C 4A	PC010	A C 5A		
R1429	B C 2A	R3701	B C 1C	R4349	A C 4B	R4901	A C 4A	S1002	A C 1A		
R1430	B C 2A	R3702	B C 1C	R4351	A C 3B	R4902	A C 3A	TH3001	A C 2B		
R1433	B C 2A	R3703	B C 1B	R4352	A C 3B	R4903	A C 4A	TL1001	B C 1B		
R1437	B C 1A	R3704	B C 1B	R4353	A C 3B	R4904	A C 3A	TL1002	B C 2B		
R1438	B C 2A	R3706	B C 1C	R4354	A C 3C	R4905	A C 3A	TL1003	B C 2C		
R1439	B C 2A	R3707	B C 1C	R4355	A C 3C	R4906	A C 3A	TL1004	B C 2C		
R1440	B C 2A	R3708	B C 1C	R4356	A C 3B	R4907	A C 3A	TL1401	B C 1A		
R1441	B C 2A	R3709	B C 1C	R4358	A C 3B	R4908	A C 3A	TL1402	B C 1A		
R1442	B C 2A	R3710	B C 1C	R4360	A C 3B	R4909	A C 3A	TL1403	B C 1A		
R1443	B C 1A	R3712	B C 1C	R4362	A C 3B	R4910	A C 3A	TL1404	B C 2A		
R1444	B C 1A	R3713	B C 2C	R4363	A C 3C	R4911	A C 3A	TL1405	B C 1A		
R1445	B C 1A	R3714	B C 1C	R4364	A C 3C	R4912	A C 3A	TL1406	B C 2A		
R2001	A C 4A	R3715	B C 1C	R4365	A C 3C	R4913	A C 3A	TL1407	B C 2A		
R2002	A C 4B	R3716	B C 2C	R4366	A C 3B	R4914	A C 3A	TL1408	B C 2A		
R2003	A C 1A	R3731	B C 1C	R4367	A C 3B	R4915	A C 3A	TL1409	B C 2A		
R2004	A C 1A	R3732	B C 1C	R4368	A C 3C	R4916	A C 3A	TL1410	B C 2A		
R2005	A C 1A	R3733	B C 1C	R4369	A C 2C	R4917	A C 3A	TL1411	B C 2A		
R2006	A C 1A	R3901	B C 2B	R4370	A C 2C	R4918	A C 3A	TL1412	B C 1A		
R2007	A C 1A	R3902	B C 2B	R4371	A C 3C	R4919	A C 3A	TL1413	B C 2A		
R2008	A C 1A	R3903	B C 2B	R4372	A C 3B	R4920	A C 3A	TL1414	B C 2A		
R2009	A C 1A	R3904	B C 2B	R4373	A C 3C	R4921	A C 3A	TL1415	B C 2A		
R2010	A C 1A	R3951	B C 3C	R4374	A C 3B	R4922	A C 4A	TL1416	B C 2A		
R2011	A C 1A	R3952	B C 3C	R4375	A C 3C	R4923	A C 4A	TL2001	A C 4B		
R2012	A C 1A	R3953	B C 3C	R4376	A C 2C	R4924	A C 4A	TL2002	A C 3A		
R2013	B C 4A	R3954	B C 3C	R4377	A C 3B	R4926	A C 3A	TL2004	A C 3A		
R2014	B C 4A	R3955	B C 3C	R4378	A C 2C	R5001	B C 4B	TL2005	A C 3A		
R2015	A C 4C	R3956	B C 3C	R4379	A C 2C	R5002	B C 4B	TL2007	B C 4C		
								TL2008	B C 4C		





4.2 AUDIO CIRCUIT BOARD

FOIL SIDE(B)

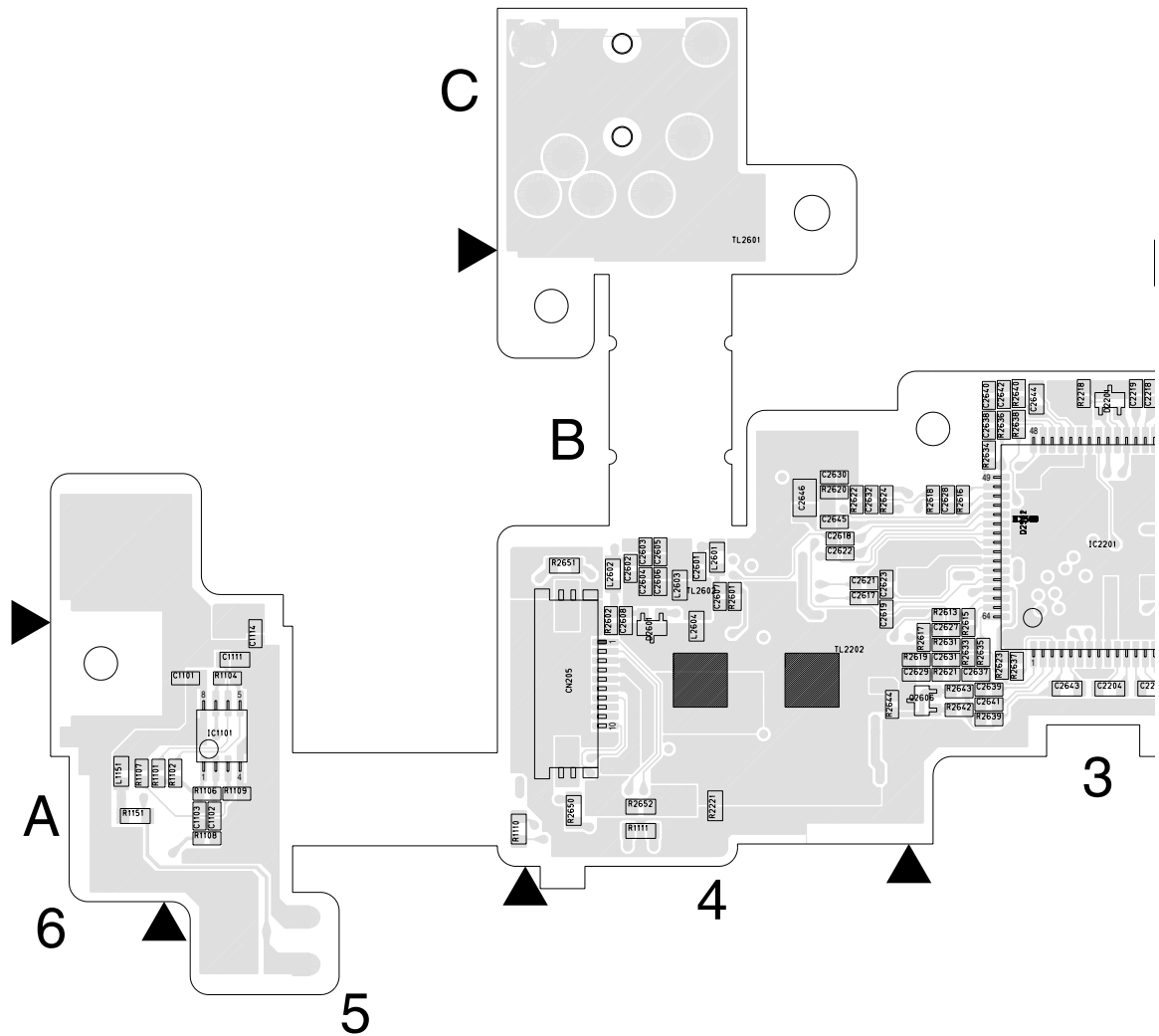


04 AUDIO PWB
YB10304-01-02

COMPONENT PARTS LOCATION GUIDE <AUDIO >

REF.NO.	LOCATION	REF.NO.	LOCATION	REF.NO.	LOCATION	REF.NO.	LOCATION	REF.NO.	LOCATION	REF.NO.	LOCATION	REF.NO.	LOCATION
CAPACITOR													
C1101	A C 5A	C2217	A C 3B	C2606	A C 4B	C2630	A C 4B	C2705	A C 2B	D2601	A C 4A	L2206	A C 3B
C1102	A C 5A	C2218	A C 3B	C2607	A C 4B	C2631	A C 3A	C2706	A C 2B	D2602	B C 4A	L2601	A C 4B
C1103	A C 5A	C2219	A C 3B	C2608	A C 4B	C2632	A C 4B	C2707	A C 3B	D2603	B C 3B	L2602	A C 4B
C1111	A C 5A	C2220	B C 3B	C2609	B C 4A	C2633	B C 3B	C2708	A C 3B	D2701	B C 3B	L2603	A C 4B
C1112	B C 6A	C2221	B C 3B	C2610	B C 4B	C2634	B C 4B	C2709	A C 2B	D2702	B C 3B	L2604	A C 4A
C1113	B C 5A	C2222	B C 3B	C2611	B C 4A	C2635	B C 3A	C2710	A C 3B	D2703	B C 3B	L2605	B C 4A
C1114	A C 5A	C2223	B C 3B	C2612	B C 4B	C2636	B C 4B	C2711	B C 2B	D2704	B C 3B	L2606	B C 4A
C1151	B C 6A	C2224	B C 4B	C2613	B C 4A	C2637	A C 3A	C2712	B C 2B	D2705	B C 3B	L2607	B C 4A
C2201	B C 3A	C2225	B C 3B	C2614	B C 4A	C2638	A C 3B	C2901	B C 1B	D2706	B C 2B	L2608	B C 4A
C2202	B C 3A	C2226	B C 3B	C2615	B C 4A	C2639	A C 3A	C2902	B C 1B	D2901	A C 1B	L2901	B C 1B
C2203	A C 3A	C2227	B C 3B	C2616	B C 4A	C2640	A C 3B	C2903	A C 1B	D2902	A C 1B	L2902	B C 1B
C2204	A C 3A	C2228	A C 3B	C2617	A C 4B	C2641	A C 3A	C2904	A C 1A	D2903	A C 1B	L2903	B C 1B
C2205	A C 3A	C2229	B C 3B	C2618	A C 4B	C2642	A C 3B	C2905	A C 1A			L2904	B C 1B
C2206	A C 3A	C2230	B C 1B	C2619	A C 4B	C2643	A C 3A	C2906	A C 1B	IC			
C2207	A C 3A	C2231	B C 1B	C2620	B C 4B	C2644	A C 3B	C2907	A C 1B	IC1101	A C 5A	L2905	B C 1B
C2208	A C 3A	C2232	A C 1B	C2621	A C 4B	C2645	A C 4B	CONNECTOR				L2906	A C 1A
C2209	A C 3A	C2233	A C 1B	C2622	A C 4B	C2646	A C 4B	CN201	B C 2C	COIL			
C2210	B C 4A	C2234	A C 1B	C2623	A C 4B	C2647	B C 4B	CN202	B C 1B	L1101	B C 5A	L2907	B C 1B
C2211	B C 3A	C2235	B C 1B	C2624	B C 4B	C2648	B C 4B	CN203	B C 1A	L1151	B C 6A	L2908	B C 1B
C2212	B C 3B	C2601	A C 4B	C2625	B C 4A	C2649	B C 3B	CN204	B C 4A	L2201	B C 3B	L2909	B C 1A
C2213	B C 3B	C2602	A C 4B	C2626	B C 4B	C2701	A C 3A	CN205	A C 4A	L2202	A C 3B	L2910	B C 1B
C2214	A C 3B	C2603	A C 4B	C2627	A C 3A	C2702	A C 3B	TRANSISTOR				L2911	A C 1A
C2216	A C 3B	C2604	A C 4B	C2628	A C 3B	C2703	A C 3B	D2201	A C 3B	L2203	B C 3B	Q1151	A D 5A
		C2605	A C 4B	C2629	A C 3A	C2704	A C 2B			L2204	B C 3B	Q2201	A C 2A
										L2205	B C 3B	Q2202	B C 4A

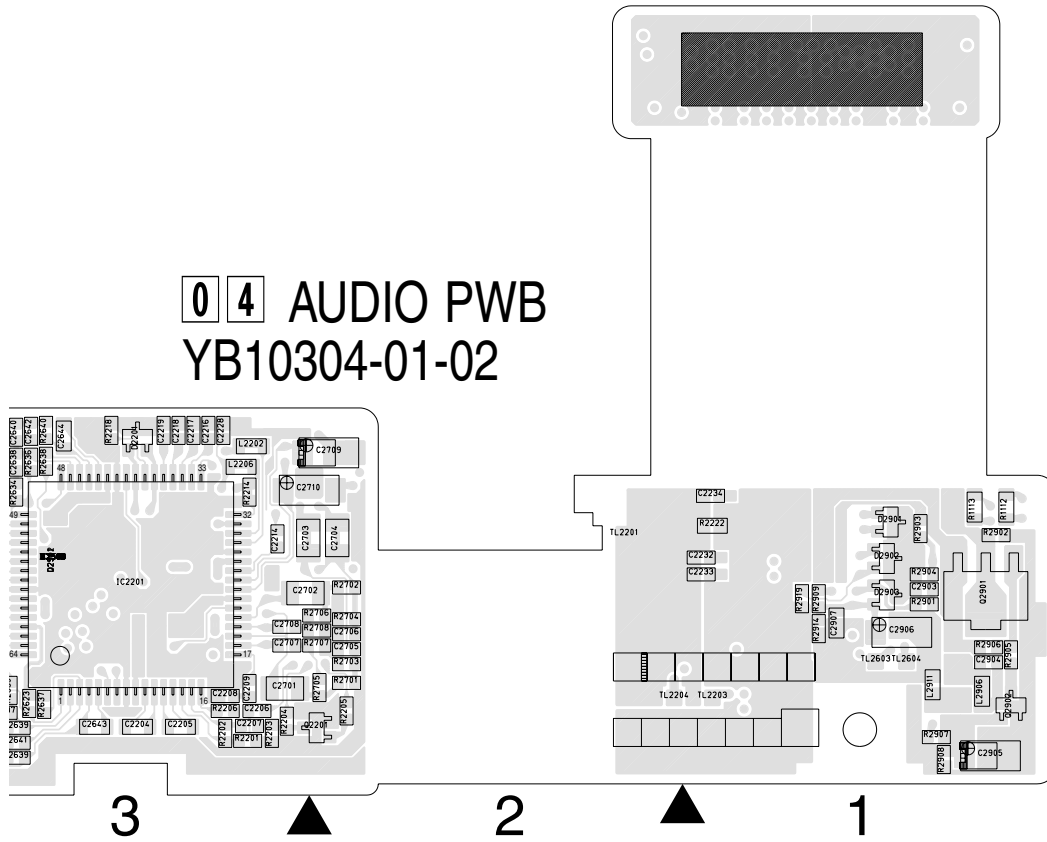
COMPONENT SIDE(A)



COMPONENT PARTS LOCATION GUIDE < AUDIO >

REF.NO.	LOCATION	REF.NO.	LOCATION	REF.NO.	LOCATION	REF.NO.	LOCATION	REF.NO.	LOCATION	REF.NO.	LOCATION	REF.NO.	LOCATION		
CAPACITOR															
C1101	A C 5A	C2217	A C 3B	C2606	A C 4B	C2630	A C 4B	C2705	A C 2B	D2601	A C 4A	L2206	A C 3B		
C1102	A C 5A	C2218	A C 3B	C2607	A C 4B	C2631	A C 3A	C2706	A C 2B	D2602	B C 4A	L2601	A C 4B		
C1103	A C 5A	C2219	A C 3B	C2608	A C 4B	C2632	A C 4B	C2707	A C 3B	D2603	B C 3B	L2602	A C 4B		
C1111	A C 5A	C2220	B C 3B	C2609	B C 4A	C2633	B C 3B	C2708	A C 3B	D2701	B C 3B	L2603	A C 4B		
C1112	B C 6A	C2221	B C 3B	C2610	B C 4B	C2634	B C 4B	C2709	A C 2B	D2702	B C 3B	L2604	A C 4A		
C1113	B C 5A	C2222	B C 3B	C2611	B C 4A	C2635	B C 3A	C2710	A C 3B	D2703	B C 3B	L2605	B C 4A		
C1114	A C 5A	C2223	B C 3B	C2612	B C 4B	C2636	B C 4B	C2711	B C 2B	D2704	B C 3B	L2606	B C 4A		
C1151	B C 6A	C2224	B C 4B	C2613	B C 4A	C2637	A C 3A	C2712	B C 2B	D2705	B C 3B	L2607	B C 4A		
C2201	B C 3A	C2225	B C 3B	C2614	B C 4A	C2638	A C 3B	C2901	B C 1B	D2706	B C 2B	L2608	B C 4A		
C2202	B C 3A	C2226	B C 3B	C2615	B C 4A	C2639	A C 3A	C2902	B C 1B	D2901	A C 1B	L2901	B C 1B		
C2203	B C 3A	C2227	B C 3B	C2616	B C 4A	C2640	A C 3B	C2903	A C 1B	D2902	A C 1B	L2902	B C 1B		
C2204	A C 3A	C2228	A C 3B	C2617	A C 4B	C2641	A C 3A	C2904	A C 1A	D2903	A C 1B	L2903	B C 1B		
C2205	A C 3A	C2229	B C 3B	C2618	A C 4B	C2642	A C 3B	C2905	A C 1A	IC					
C2206	A C 3A	C2230	B C 1B	C2619	A C 4B	C2643	A C 3A	C2906	A C 1B	IC1101	A C 5A	L2904	B C 1B		
C2207	A C 3A	C2231	B C 1B	C2620	B C 4B	C2644	A C 3B	C2907	A C 1B	IC2201	A C 3B	L2905	B C 1B		
C2208	A C 3A	C2232	A C 1B	C2621	A C 4B	C2645	A C 4B	CONNECTOR				L2906	A C 1A		
C2209	A C 3A	C2233	A C 1B	C2622	A C 4B	C2646	A C 4B	CN201	B C 2C	COIL				L2907	B C 1B
C2210	B C 4A	C2234	A C 1B	C2623	A C 4B	C2647	B C 4B	CN202	B C 1B	L1101	B C 5A	L2908	B C 1B		
C2211	B C 3A	C2235	B C 1B	C2624	B C 4B	C2648	B C 4B	CN203	B C 1A	L1151	A C 6A	L2909	B C 1A		
C2212	B C 3B	C2601	A C 4B	C2625	B C 4A	C2649	B C 3B	CN204	B C 4A	L2201	A C 3B	L2910	B C 1B		
C2213	B C 3B	C2602	A C 4B	C2626	B C 4B	C2701	A C 3A	CN205	A C 4A	L2202	A C 3B	L2911	A C 1A		
C2214	A C 3B	C2603	A C 4B	C2627	A C 3A	C2702	A C 3B	DIODE				Q1151	A D 5A		
C2216	A C 3B	C2604	A C 4B	C2628	A C 3B	C2703	A C 3B	D2201	A C 3B	L2203	B C 3B	Q2201	A C 2A		
		C2605	A C 4B	C2629	A C 3A	C2704	A C 2B			L2204	B C 3B	Q2202	B C 4A		
										L2205	B C 3B				

04 AUDIO PWB YB10304-01-02



REF.NO.	LOCATION	REF.NO.	LOCATION	REF.NO.	LOCATION	REF.NO.	LOCATION	REF.NO.	LOCATION	REF.NO.	LOCATION	REF.NO.	LOCATION
Q2203	B C 3B	R1110	A C 5A	R2220	B C 3B	R2621	A C 3A	R2645	B C 4A	R2903	A C 1B	TL2603	A C 1A
Q2601	B C 4A	R1111	A C 4A	R2221	A C 4A	R2622	A C 4B	R2646	B C 4B	R2904	A C 1B	TL2604	A C 1A
Q2602	B C 4B	R1112	A C 1B	R2222	A C 1B	R2623	A C 3A	R2647	B C 4A	R2905	A C 1B		
Q2603	B C 3A	R1113	A C 1B	R2223	B C 3B	R2624	A C 4B	R2648	B C 4B	R2906	A C 1B		
Q2604	B C 4B	R1151	A C 6A	R2601	A C 4B	R2625	B C 3B	R2649	B C 4A	R2907	A C 1A		
Q2605	B C 4B	R2201	A C 3A	R2602	A C 4B	R2626	B C 4B	R2650	A C 4A	R2908	A C 1A		
Q2606	A C 3A	R2202	A C 3A	R2603	B C 4B	R2627	B C 3A	R2651	A C 4B	R2909	A C 1B		
Q2701	B C 3B	R2203	A C 3A	R2604	B C 4B	R2628	B C 4B	R2652	A C 4A	R2910	B C 1B		
Q2702	B C 2B	R2204	A C 3A	R2605	B C 4A	R2629	B C 3B	R2701	A C 2A	R2911	B C 1A		
Q2703	B C 2B	R2205	A C 2A	R2606	B C 4B	R2630	B C 4B	R2702	A C 2B	R2912	B C 1A		
Q2704	B C 2B	R2206	A C 3A	R2607	B C 4A	R2631	A C 3A	R2703	A C 2A	R2913	B C 1A		
Q2901	A C 1B	R2207	B C 4A	R2608	B C 4B	R2632	B C 4B	R2704	A C 2B	R2914	A C 1B		
Q2902	A C 1A	R2208	B C 3B	R2609	B C 4A	R2633	A C 3A	R2705	A C 2A	R2917	B C 1A		
Q2903	B C 1B	R2209	B C 3B	R2610	B C 4B	R2634	A C 3B	R2706	A C 2B	R2918	B C 1A		
Q2904	B C 1A	R2210	B C 3B	R2611	B C 4A	R2635	A C 3A	R2707	A C 2B	R2919	A C 1B		
Q2905	B C 1A	R2211	B C 3B	R2612	B C 4A	R2636	A C 3B	R2708	A C 2B	R2920	B C 1B		
		R2212	B C 3B	R2613	A C 3B	R2637	A C 3A	R2709	B C 3B	OTHER			
		R2213	B C 3B	R2614	B C 4B	R2638	A C 3B	R2710	B C 2B				
R1101	A C 6A	R2214	A C 3B	R2615	A C 3B	R2639	A C 3A	R2711	B C 2B	J201	B D 4C		
R1102	A C 5A	R2215	B C 3B	R2616	A C 3B	R2640	A C 3B	R2712	B C 2B	TL2201	A C 2B		
R1104	A C 5A	R2216	B C 3B	R2617	A C 3A	R2641	B C 3B	R2713	B C 3B	TL2202	A C 4A		
R1106	A C 5A	R2217	B C 3B	R2618	A C 3B	R2642	A C 3A	R2714	B C 3B	TL2203	A C 1A		
R1107	A C 6A	R2218	A C 3B	R2619	A C 3A	R2643	A C 3A	R2901	A C 1B	TL2204	A C 2A		
R1108	A C 5A	R2219	B C 3B	R2620	A C 4B	R2644	A C 4A	R2902	A C 1B	TL2601	A C 4C		
R1109	A C 5A									TL2602	A C 4B		